

Project „Cultural landscapes of mountain and highland river valleys”
supported by a grant from Norway
through the Norwegian Financial Mechanism
in the framework of Polish-Norwegian Research Fund



Monitoring in Land Use and Land Cover Change in Beijing Mountain Area Based on LandsatTM and “HJ – 1”

-----A case in Changping District

Gaiying Chen
Beijing University of Agriculture
Faculty of Landscape Design and Forestry

Seminar in Krakow 03-07.07.2010

*Supported by a grant from Norway through
the Norwegian Financial Mechanism*



Project „Cultural landscapes of mountain and highland river valleys”
supported by a grant from Norway
through the Norwegian Financial Mechanism
in the framework of Polish-Norwegian Research Fund



Outline:

Background:

Changping District in Beijing

Data:

LandsatTM (19920907, 19990701,
20060906); HJ-120090813

Methodology:

remote sensing as mapping tools to
classify land use

Conclusion



Project „Cultural landscapes of mountain and highland river valleys” supported by a grant from Norway through the Norwegian Financial Mechanism in the framework of Polish-Norwegian Research Fund

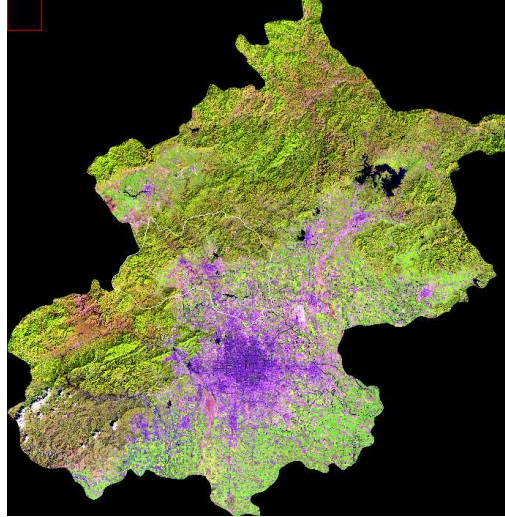


Location of the study area

Location:midwest of Beijing

Beijing total area : 16808km²

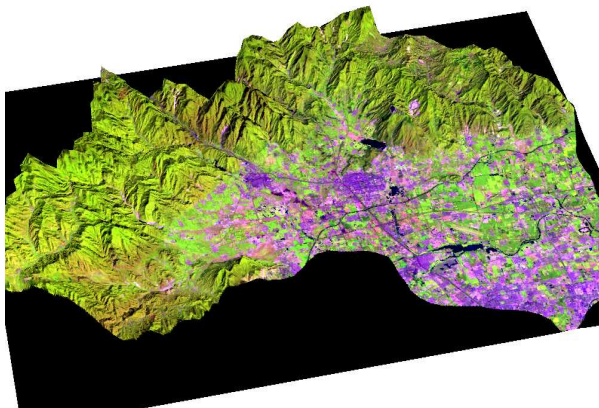
Beijing Population: 22,000,000



Project „Cultural landscapes of mountain and highland river valleys” supported by a grant from Norway through the Norwegian Financial Mechanism in the framework of Polish-Norwegian Research Fund



Changping District DEM (2006)



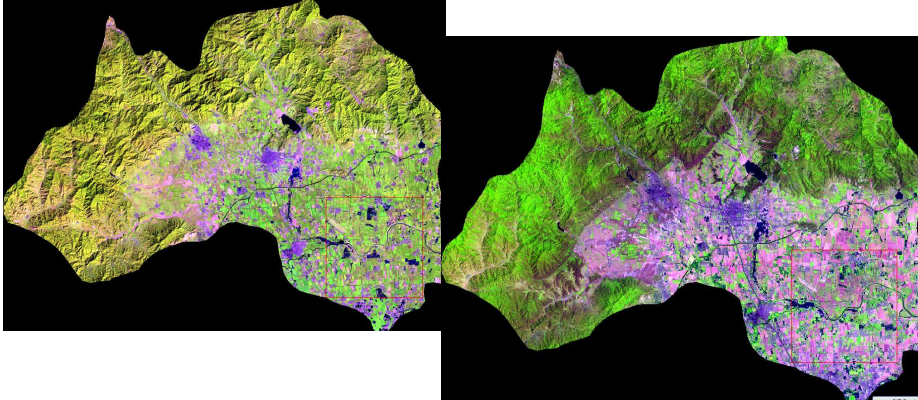
- Total area:
- 1352km², mountain area:
- 800 km²,
- plain area:
- 552 km²
- Population:



Project „Cultural landscapes of mountain and highland river valleys”
supported by a grant from Norway
through the Norwegian Financial Mechanism
in the framework of Polish-Norwegian Research Fund



LandsatTM543 Changping 19920907---19990701

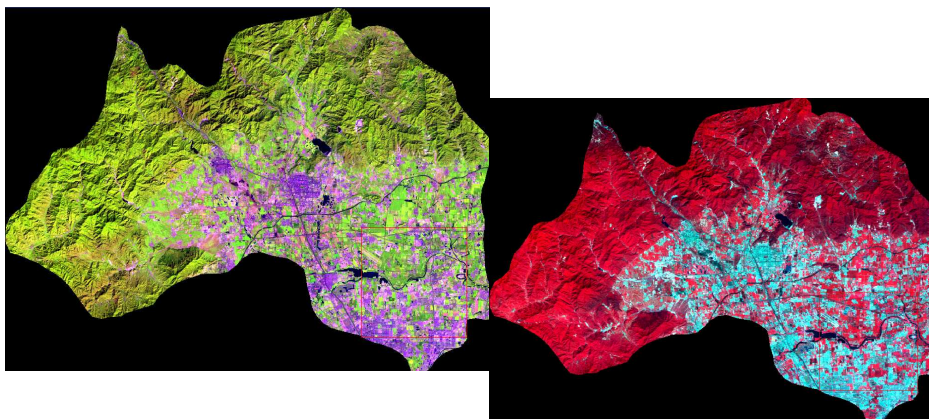


Project „Cultural landscapes of mountain and highland river valleys”
supported by a grant from Norway
through the Norwegian Financial Mechanism
in the framework of Polish-Norwegian Research Fund



Changping LandsatTM543

19990701--20060906



Conclusion

1. urban land expand sharply in south of the area;
2. the arable land change into urban land hougely
- 3.a lot of forest land and water area loss