

Project „Cultural landscapes of mountain and highland river valleys”
supported by a grant from Norway
through the Norwegian Financial Mechanism
in the framework of Polish-Norwegian Research Fund



“Valley Economy” Strategies in Beijing Mountainous Area ----A Case on sustainable development

Pingsheng Leng, Gaiying Chen, Ge Chen, Zenghui Hu
Faculty of Landscape design and Forestry
Beijing University of Agriculture

Seminar in Krakow 03-07.07.2010

*Supported by a grant from Norway through
the Norwegian Financial Mechanism*



UNIVERSITY OF AGRICULTURE
IN KRAKOW



Project „Cultural landscapes of mountain and highland river valleys”
supported by a grant from Norway
through the Norwegian Financial Mechanism
in the framework of Polish-Norwegian Research Fund



Background:

Acting as the ecological conservation region of Beijing, mountainous area covers 62% of Beijing with an area of 16808km², but with only 5% of the total population. And the living standard of local people are significantly lower than the average of Beijing. Especially in recent years, after most of pollution industries located in this region were closed down, the local people lost their major income sources , so the government faced a challenge how to improve the living level of local people on the premise of preserving the environment. Developing “valley economy” is becoming of a new choice to solve this dilemma in mountainous area.



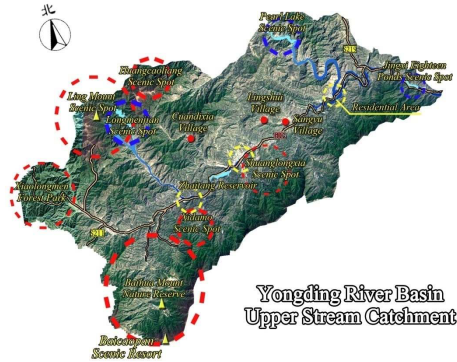
UNIVERSITY OF AGRICULTURE
IN KRAKOW



Project „Cultural landscapes of mountain and highland river valleys”
 supported by a grant from Norway
 through the Norwegian Financial Mechanism
 in the framework of Polish-Norwegian Research Fund



case study
The upriver of Yongding river valley covers about 740 km², and about 50 thousand people live in this region.



Seminar in Krakow 03-07.07.2010

Supported by a grant from Norway through
 the Norwegian Financial Mechanism



Project „Cultural landscapes of mountain and highland river valleys”
 supported by a grant from Norway
 through the Norwegian Financial Mechanism
 in the framework of Polish-Norwegian Research Fund



Seminar in Krakow 03-07.07.2010

Supported by a grant from Norway through
 the Norwegian Financial Mechanism



Project „Cultural landscapes of mountain and highland river valleys”
supported by a grant from Norway
through the Norwegian Financial Mechanism
in the framework of Polish-Norwegian Research Fund



The sustainable development strategies focus on the following:

1. Closing all coal mining industries & decreasing quarry
2. Emigrating villagers living in outline mountain area to central village or town
3. Culturing a new key industry of eco-tourism and agritourism
4. Carrying out ecological restoration projects (river course, mining field, road side slope)
5. Increasing the forest acreage and forest healthy
6. Protecting and repairing cultural heritage and the remains, expanding natural conservation area
7. Strengthening fundamental construction including road/sport facilities/natural gas/agriculture projects
8. Training villagers to be in employment.

Seminar in Krakow 03-07.07.2010

*Supported by a grant from Norway through
the Norwegian Financial Mechanism*



Project „Cultural landscapes of mountain and highland river valleys”
supported by a grant from Norway
through the Norwegian Financial Mechanism
in the framework of Polish-Norwegian Research Fund



Seminar in Krakow 03-07.07.2010

*Supported by a grant from Norway through
the Norwegian Financial Mechanism*

