

Project „Cultural landscapes of mountain and highland river valleys”
supported by a grant from Norway
through the Norwegian Financial Mechanism
in the framework of Polish-Norwegian Research Fund



Landslides as an important Element of Landscape Changes

Blaž Komac, Matija Zorn, Mimi Urbanc,
ZRC SAZU, Anton Melik Geographical
Institute

Seminar in Krakow 03-07.07.2010

*Supported by a grant from Norway through
the Norwegian Financial Mechanism*



UNIVERSITY OF AGRICULTURE
IN KRAKOW



The problem of perception?!

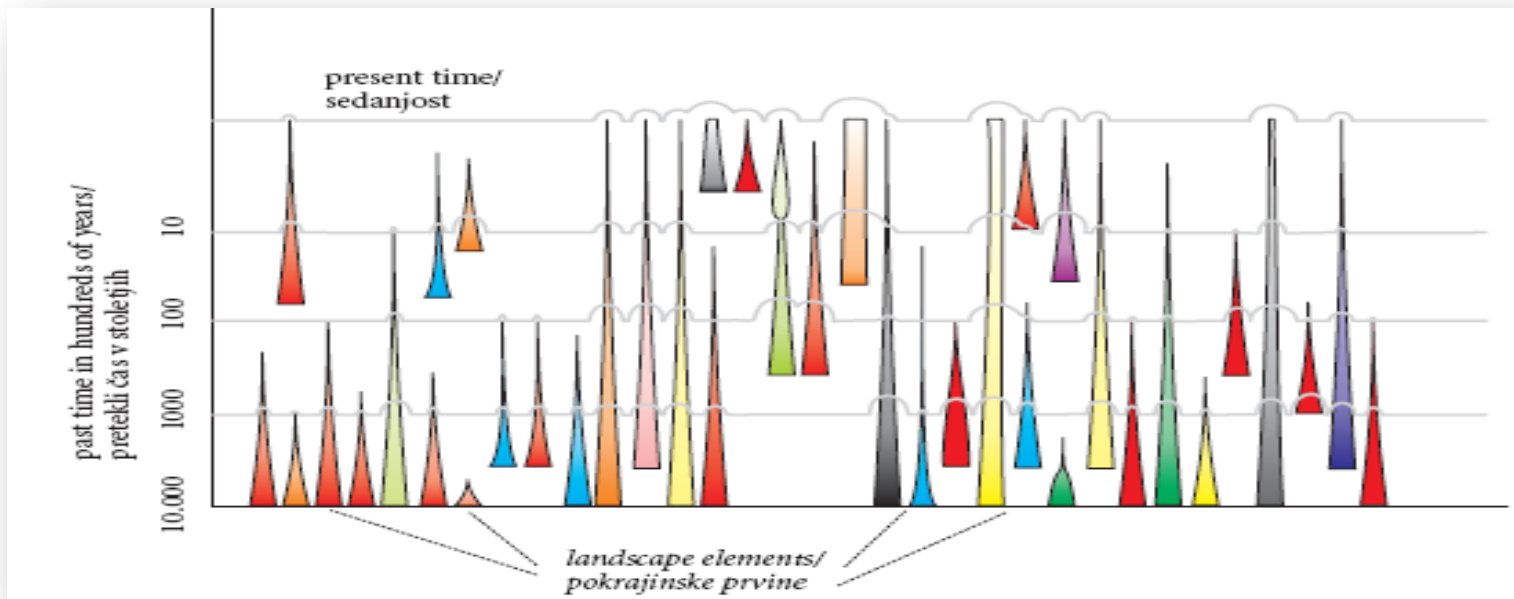


In Earth sciences, landslides have been perceived as:

- dangerous phenomena (natural hazards, natural disasters),
- source of sediments,
- process of sediment transport,

The problem of perception?!

Abundance of landslide hazard maps: social and economic aspects of landslides seem to be more important than their influence on landscape evolution.



Recent new trends

The perception of landslides being only hazardous phenomena is withdrawing only recently in geomorphology.

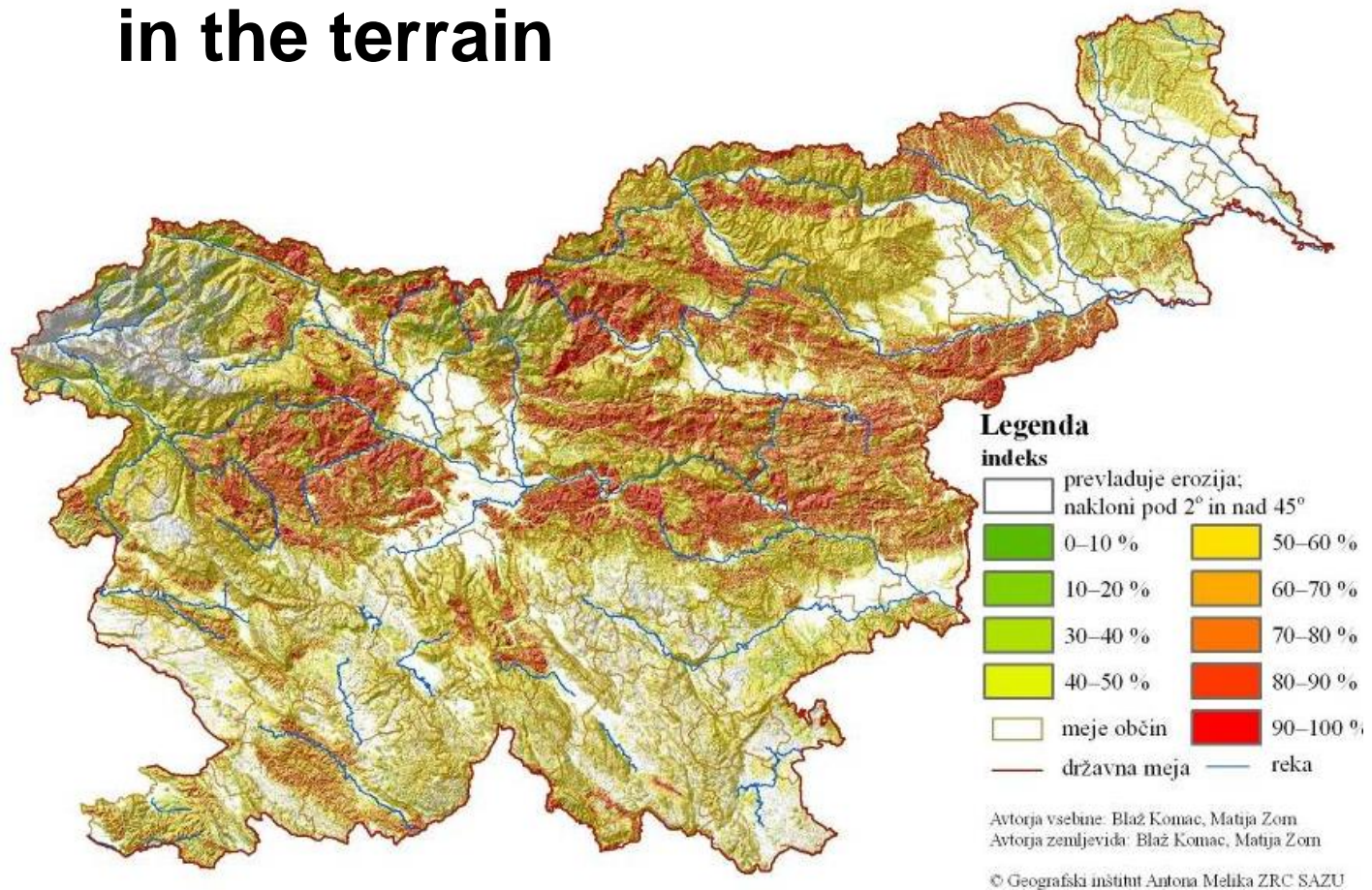


Landslides as an element of landscape change

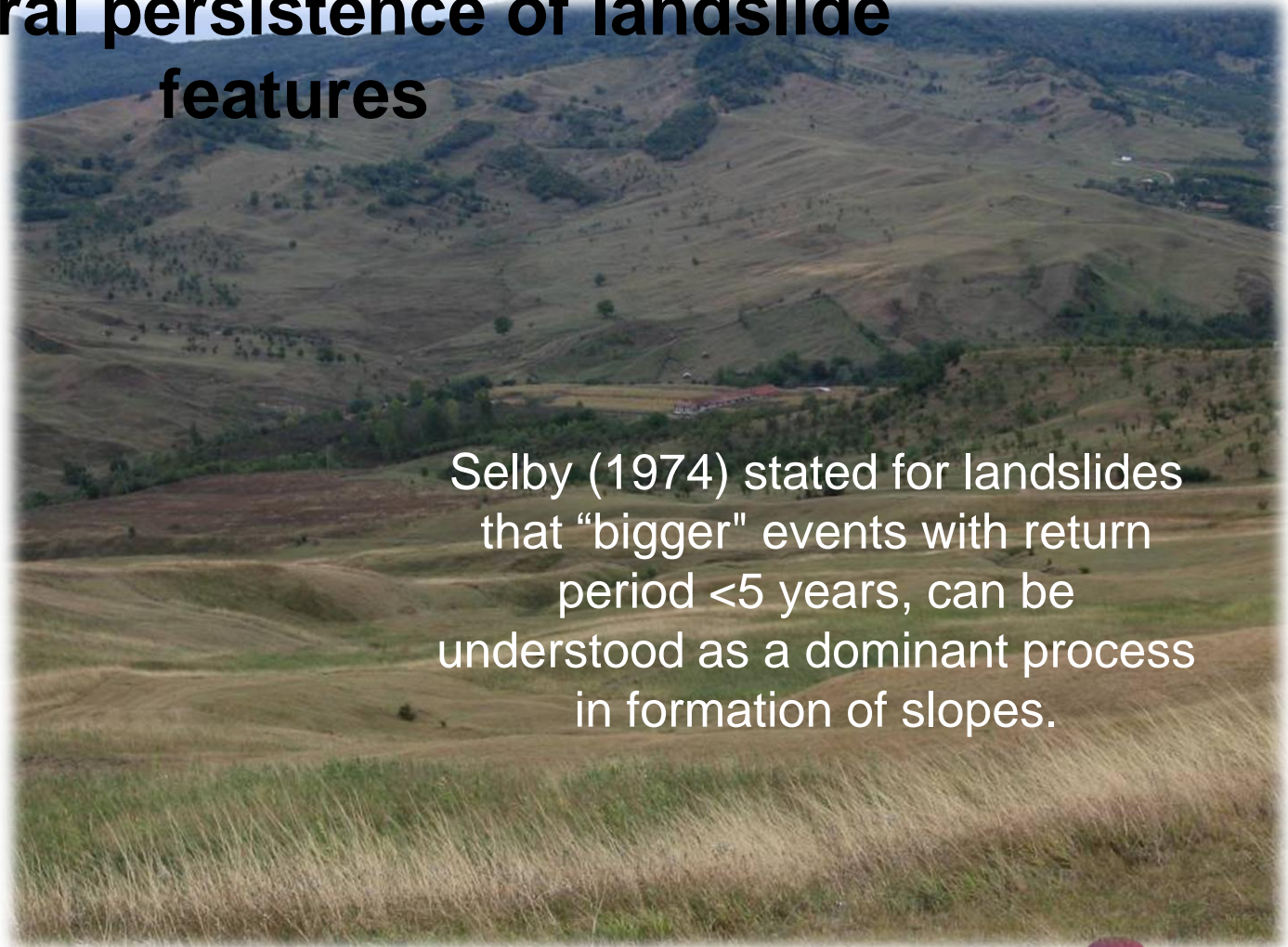
Three diagnostic criteria have been introduced to indicate the existence of landslides as an element of landscape change.



1. Extent of the landslide imprint in the terrain



2. Temporal persistence of landslide features



Selby (1974) stated for landslides that “bigger” events with return period < 5 years, can be understood as a dominant process in formation of slopes.

3. Dominance of load supply



